

SMS UNION

Manufacture Material

ASTM A182
TP 304/L and 316/L

Surface Finishing

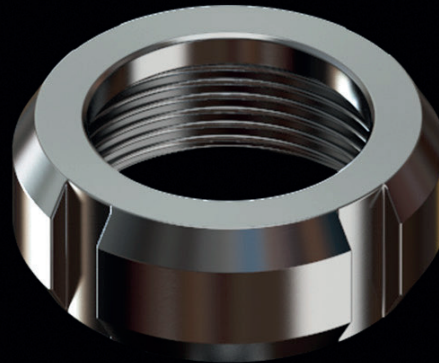
PI/PE: Ra < 0,80 µm (32 µin)
Mechanical Polishing

Seal

EPDM
Silicone
Viton

Standards and Gauges

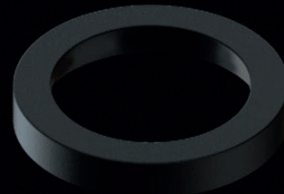
*Dimensions as per standard
SMS 1145*



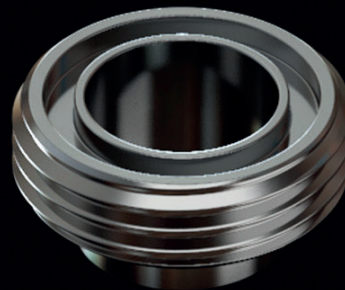
Nut



Niple



Seal



Male



SMS UNION

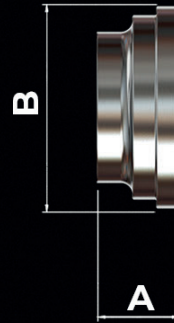
Union



Nut



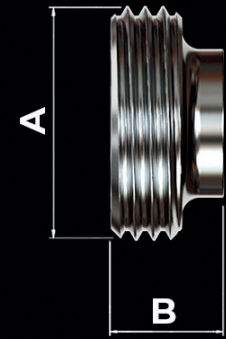
Niple



Seal



Male



Ø	A
1"	35,5
1.1/2"	37,5
2"	38,5
2.1/2"	40,5
3"	42,5
4"	49,0

A	B
19,0	50,0
23,0	72,0
24,0	82,0
26,0	98,0
27,0	112,0
29,0	146,0

A	B
14,0	34,0
14,0	55,0
14,0	65,0
15,0	80,0
15,0	93,5
17,0	126,0

A	B
32,0	5,5
48,0	5,5
61,0	5,5
73,5	5,5
86,0	5,5
114,0	5,5

A	B
40,0	19,0
60,0	21,0
70,0	22,0
85,0	23,0
98,0	25,0
132,0	30,0