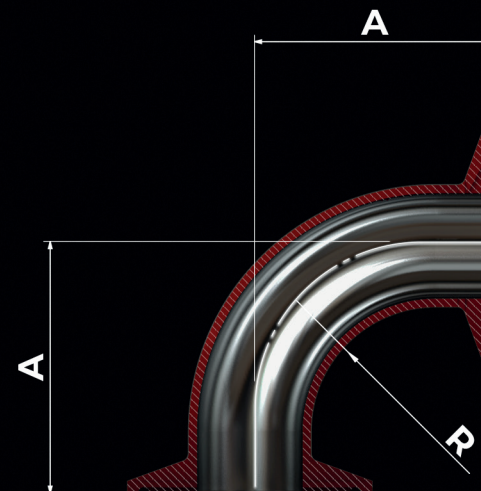
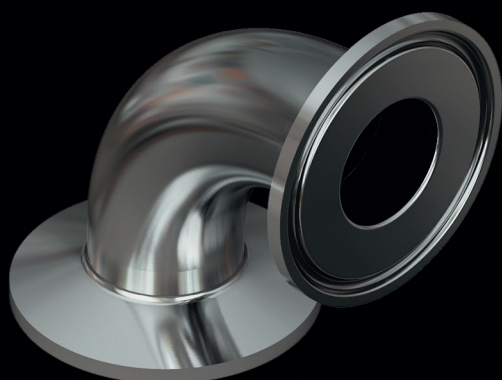


90° Curves

Tri-clamp ends

DT-4.1.1-7 (DT-23)



Ø (Diameter)	OD	ID	THK	A	R
1/4"	6,35	4,57	0,89	41,3	28,6
3/8"	9,53	7,75	0,89	41,3	28,6
1/2"	12,7	9,4	1,65	41,3	28,6
3/4"	19,05	15,75	1,65	41,3	28,6
1"	25,4	22,1	1,65	50,8	38,1
1.1/2"	38,1	34,8	1,65	69,9	57,2
2"	50,8	47,5	1,65	88,9	76,2
2.1/2"	63,5	60,2	1,65	108,0	95,3
3"	76,2	72,9	1,65	127,0	114,3
4"	101,6	97,38	2,11	168,3	152,4
6"	152,4	146,86	2,77	266,7	228,6

Manufacture Material

ASTM A207 S2 UNS
S31603 (316L)

Finishing

Internal
SF1: Ra < 0,50 µm (20 µin)
Mechanical Polishing

SF4: Ra < 0,375 µm (15 µin)
Electropolishing

External
Ra 0.80 µm (32 µin)

Measurements in mm = Dimensions according to ASME BPE standard (Table DT-3-1)

X-STEEL